

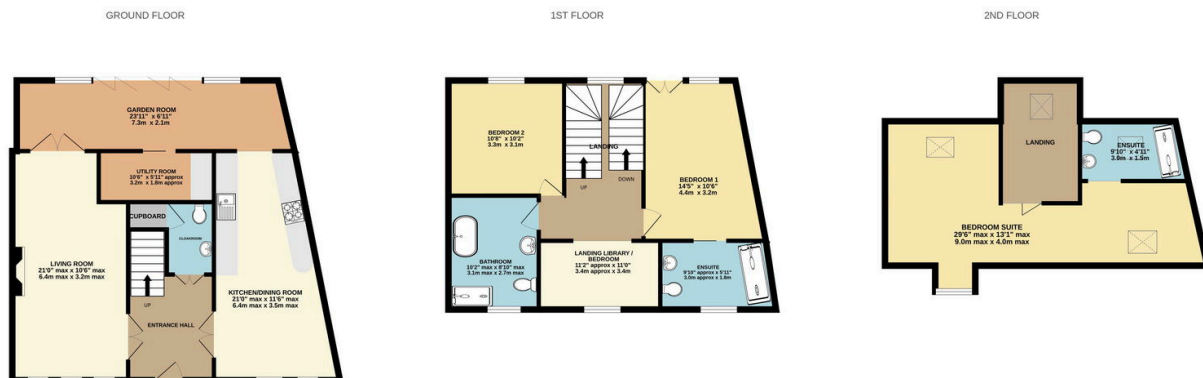
Fortescue Street, Norton St. Philip, Bath, Somerset, BA2 7PE

Offers Over £775,000

3 3 2



- Property Ref SL 0822
- Full bathroom, two ensuite shower rooms plus ground floor cloakroom
- Spacious ground floor including Garden Room, perfect for entertaining
- Three double bedrooms, with clear potential for four.
- Link detached house built by Bloor Homes around 2015
- Off street parking plus a Freehold covered car port
- Fully equipped bespoke designed kitchen
- Top floor suite; bedroom, dressing room/ study and shower room
- Designed to present owner's high specification
- Situated in favoured Norton St Philip village, seven miles from Bath



Whilst every attempt has been made to ensure the accuracy of the floorplan contained here, measurements of doors, windows, rooms and any other items are approximate and no responsibility is taken for any error, omission or mis-statement. This plan is for illustrative purposes only and should be used as such by any prospective purchaser. The services, systems and appliances shown have not been tested and no guarantee as to their operability or efficiency can be given.
Made with Metropix ©2024

An impeccably presented link detached house, designed and finished to the owner's high specification and situated in the favoured village of Norton St Philip, to the south of Bath.